



# ISM 2" Vault Door

## MODEL VD50TA

The ISM VD50TA Vault Door is a high security door which incorporates many new features that together create a superior barrier against sophisticated tool attacks as well as oxy-acetylene torch attacks. The VD50TA utilizes new composite materials and a patented locking mechanism inside a highly attractive exterior.

## DOOR

The overall thickness of the VD50TA vault door is 150 mm (6"). It is constructed of outer and inner 10 mm (0.4") thick steel plates enclosing a 30 mm (1.2") layer of C.N.A. ISM's superior torch and tool resistant composite material. The door frame is of 10 mm (0.4") thick steel and fits a standard vault room wall thickness of 300 mm (12").

## LOCKS

The VD50TA comes equipped with a U.L. listed group 1 manipulation proof combination lock and a twelve lever double bit key lock.

## BOLTWORK

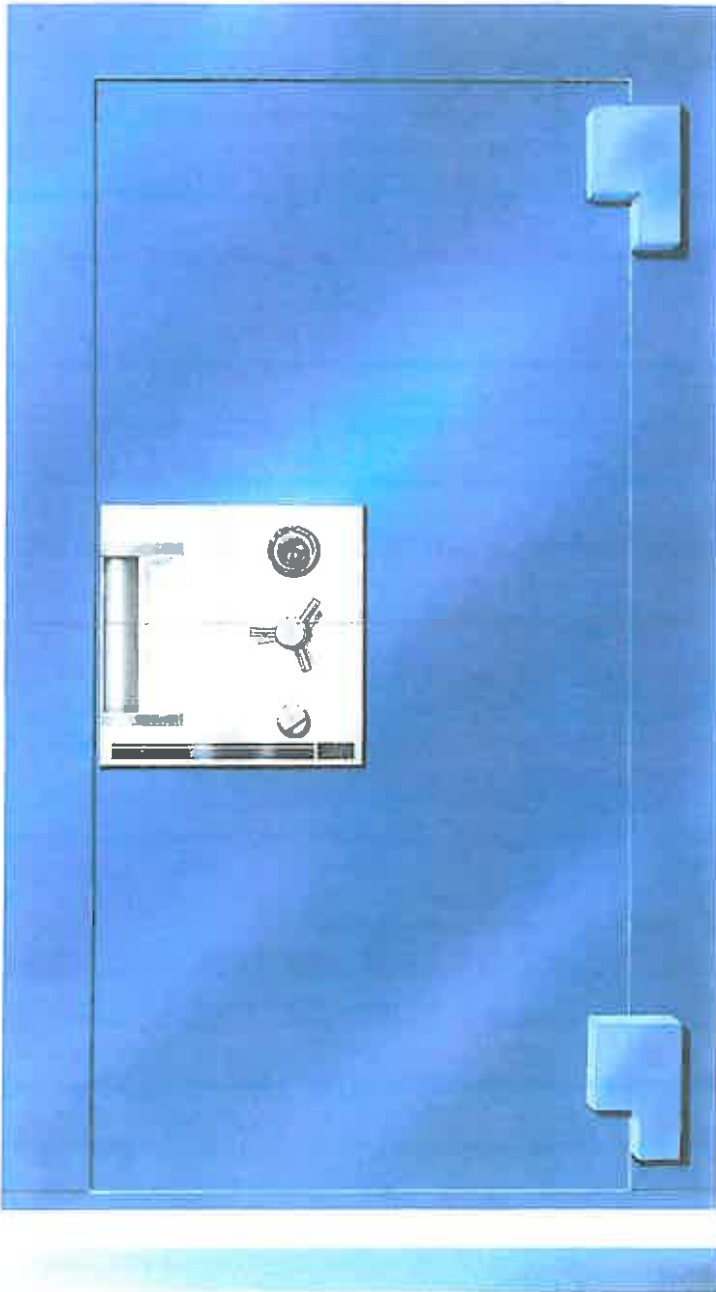
The boltwork and locking mechanism were designed to provide a maximum security barrier against attacks with explosives as well as torch and drill attacks. The VD50TA has a double action locking mechanism that extends a full door length locking bar into a high-strength steel channel in the door frame, ensuring that the bar cannot be forced back. Fixed bolts lock the hinge side of the door.

## RELOCKING DEVICES

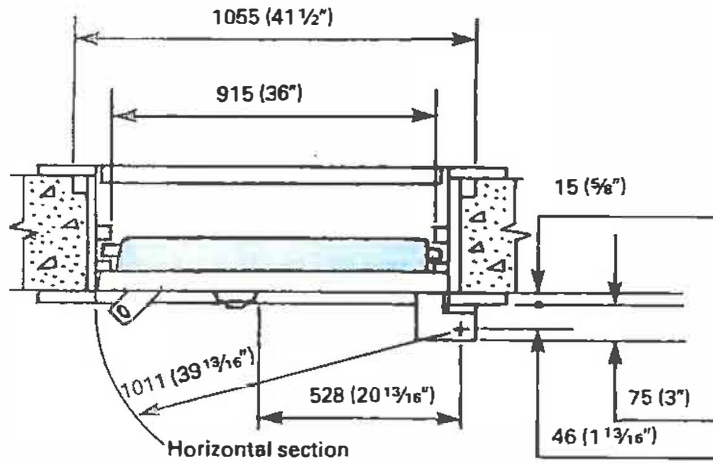
The locks and vital mechanism areas are protected by a special glass plate, which if tampered with releases a number of randomly located relockers independent of the locks. This provides the VD50TA with a maximum security deterrent against sophisticated burglary attacks.

## DAY GATE

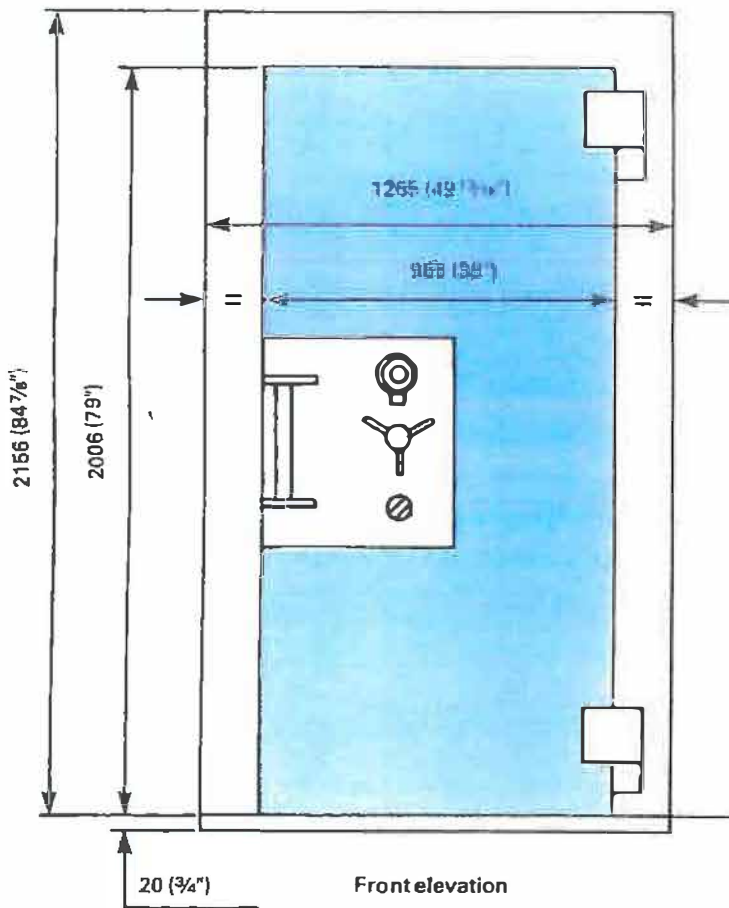
As an optional extra, an attractive anodized aluminum day gate with tinted glass is available with a cylinder lock for use during working hours when the vault door is open.



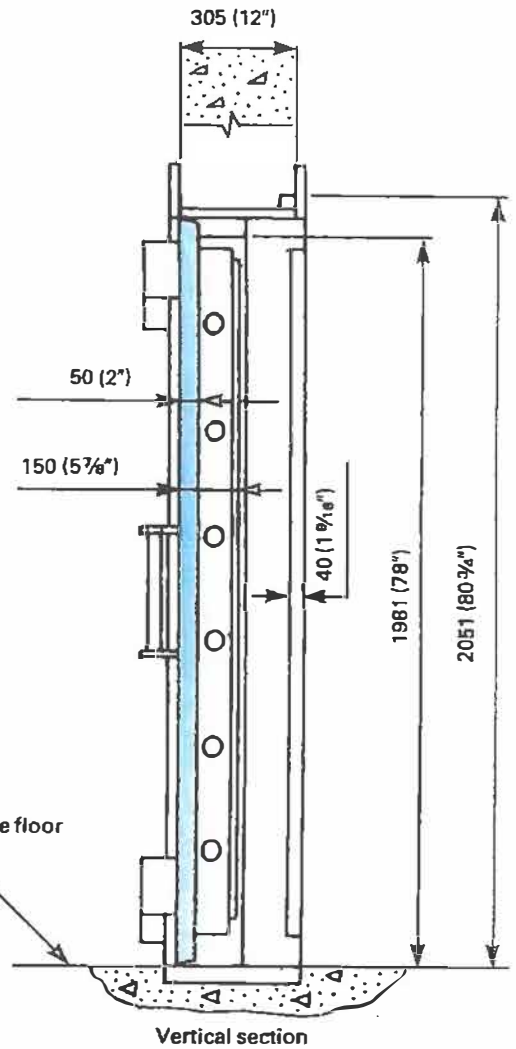
# ISM 2" Vault Door



Total Weight:  
1020 Kg. (2244 Lb.)  
Door Weight:  
663 Kg. (1459 Lb.)



Front elevation



Vertical section

